

Community Forum & Facilities Committee Meeting # 12

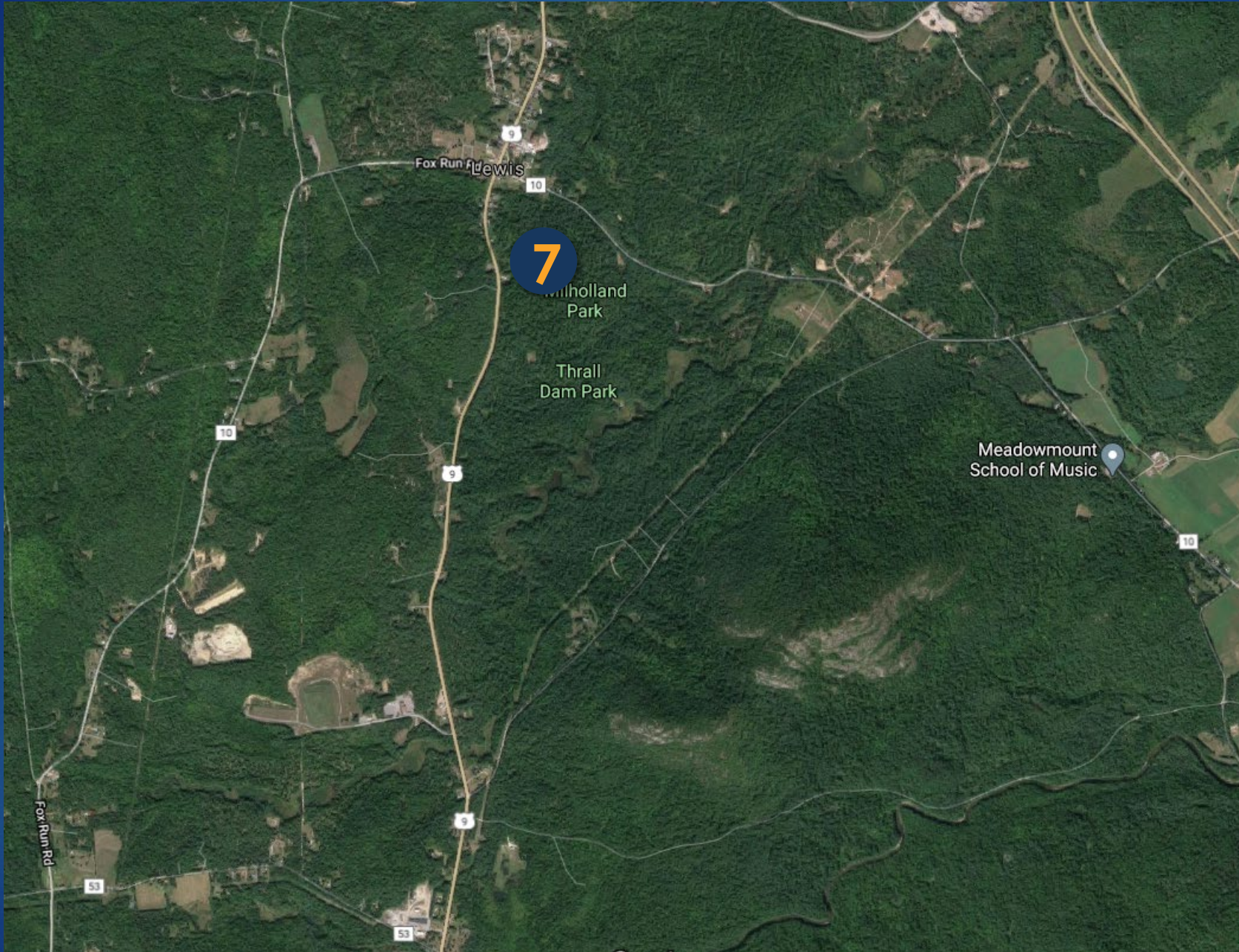
June 17, 2021

- ✓ Progress
- ✓ Scope
- ✓ Schedule
- ✓ What's Next
- ✓ Q&A



Recent Progress

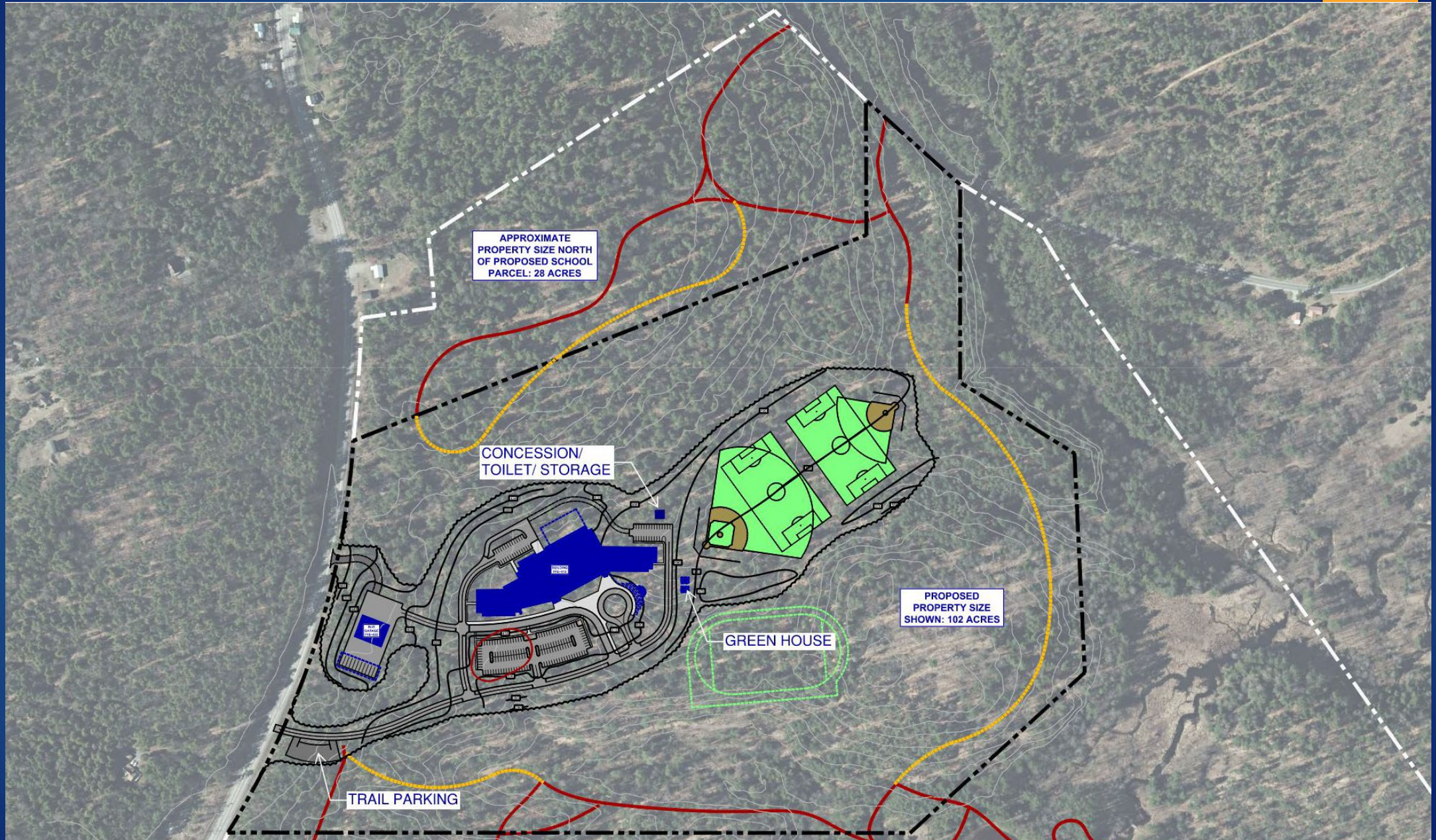
- ▶ The Archaeological Study is near complete. The preliminary information gathered this Spring does not lead us to believe there will be any findings of significance. The field work should be wrapped up in the next couple of weeks, after which the final determination will be formalized.
- ▶ Discussions were held with the County to delineate the campus boundaries and transfer procedures. The County has asked for specific documentation concerning the intended boundary line, and for information concerning the Elizabethtown Facility.
- ▶ Staff interviews were conducted on May 26 & 27. We received a lot of good ideas and suggestions which are being incorporated into the conceptual designs.

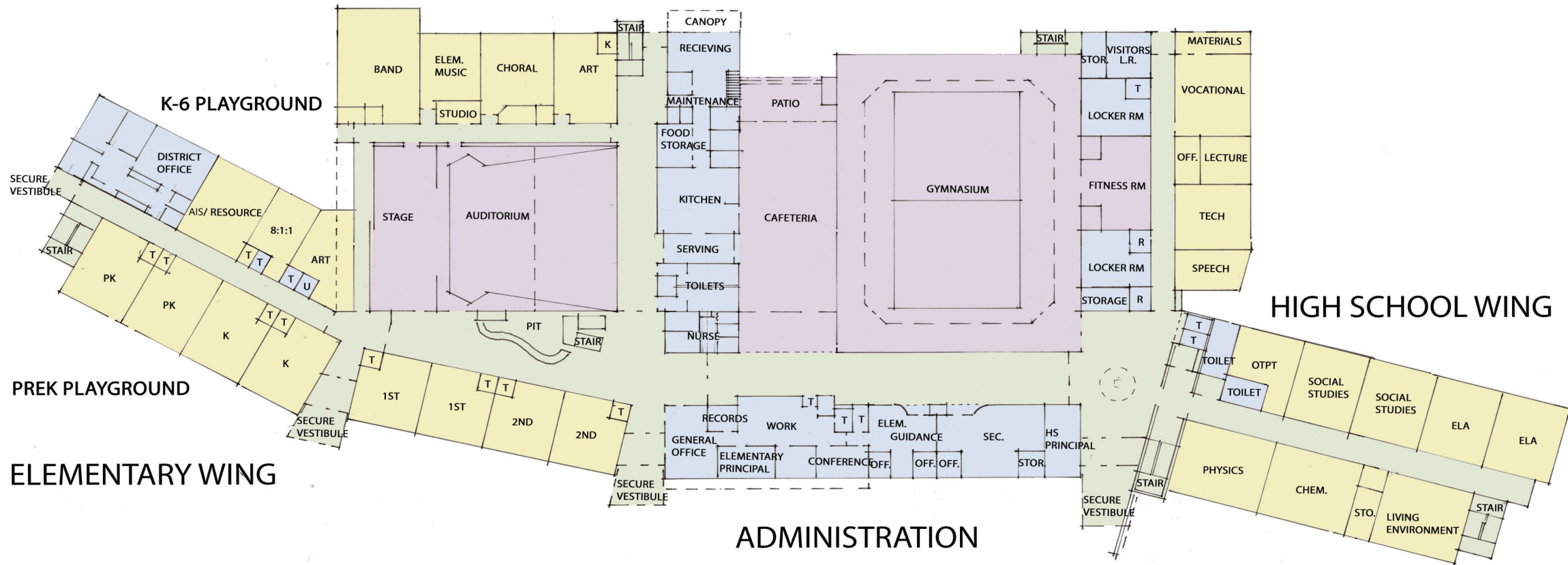


Thrall Dam Park

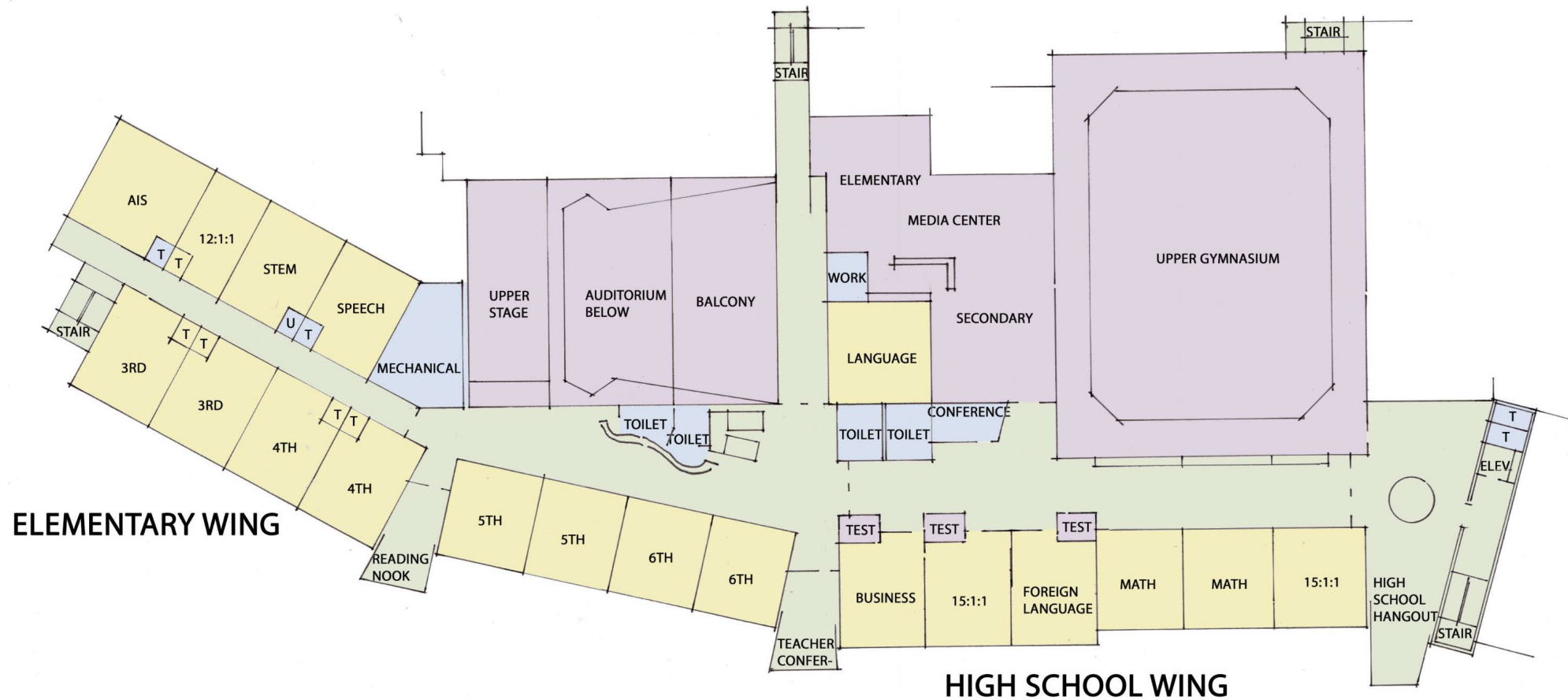


CONCEPTUAL SITE PLAN

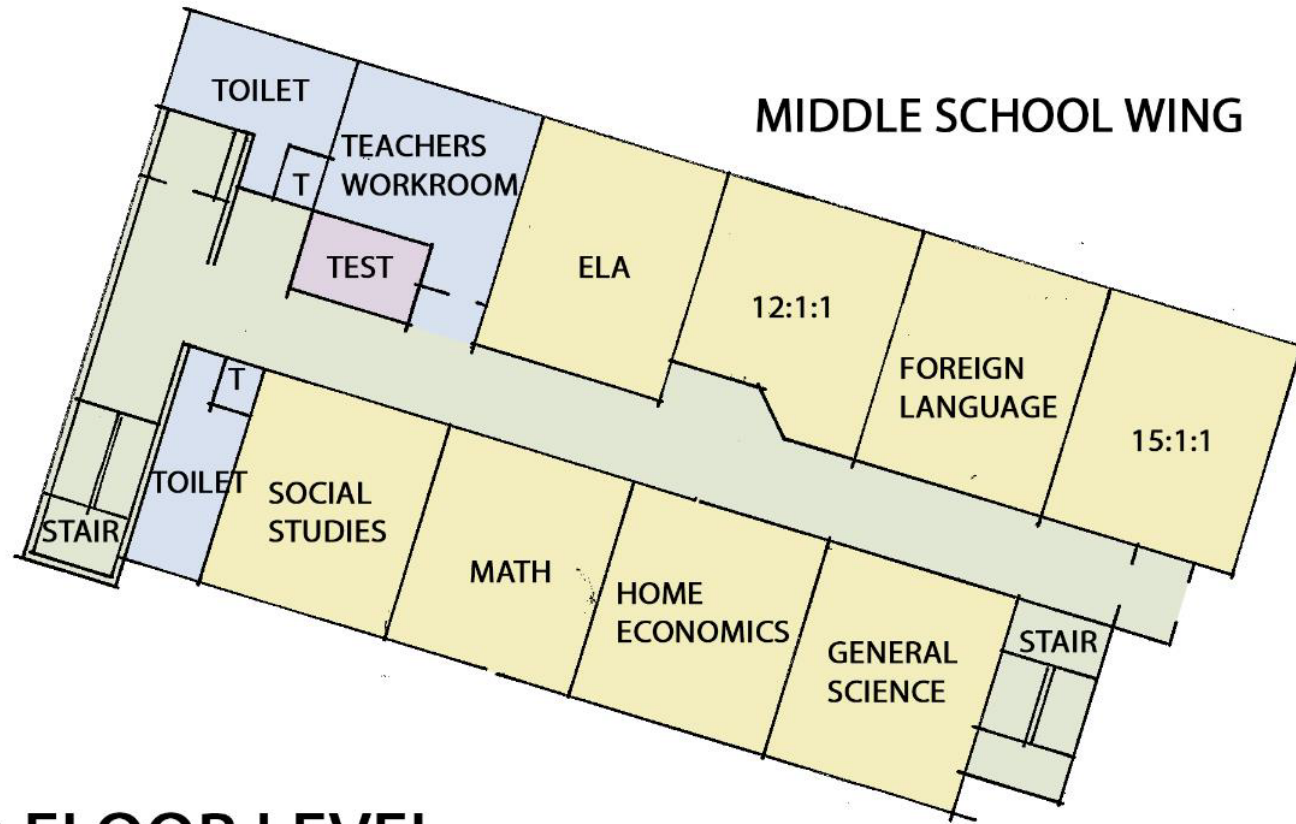




1 ST FLOOR LEVEL



SECOND FLOOR LEVEL



GROUND FLOOR LEVEL

CONCEPTUAL PROJECT SCHEDULE

Visioning, Site Selection, and Conceptual Designs

SED Preliminary Submissions

Stakeholder Interviews

Design and Budget Development

Scope and Budgets Finalized

Bond Resolution Preparation

SEQR Determination

Establish Voter Referendum Date

Voter Information Period

Voter Referendum

Preliminary Design Phase

Final Design Phase

SED Submission

SED Approval

Bid Opening

Contract Award

Site Mobilization - Site Preparation (fast tracked)

Commissioning

Occupy Building

Project Closeout

July 2020 - June 2021

March 2021

April 2021

May - June 2021

July 2021

August 2021

September 2021

September 2021

October 2021

November 2021

December 2021

January-November 2022

December 2022

April 2023

May 2023

May 2023

June 2023

October 2024

December 2024

June 2025

Community Forum & Facilities Committee Meeting # 12

June 17, 2021

What's Next?

- Obtain Maximum Cost Allowance
- Firm Up Property Transfer Agreement
- Perform Property Boundary Survey
- Continue with EIS and APA Permitting Applications
- Facilities Committee and Community Forum next month

