

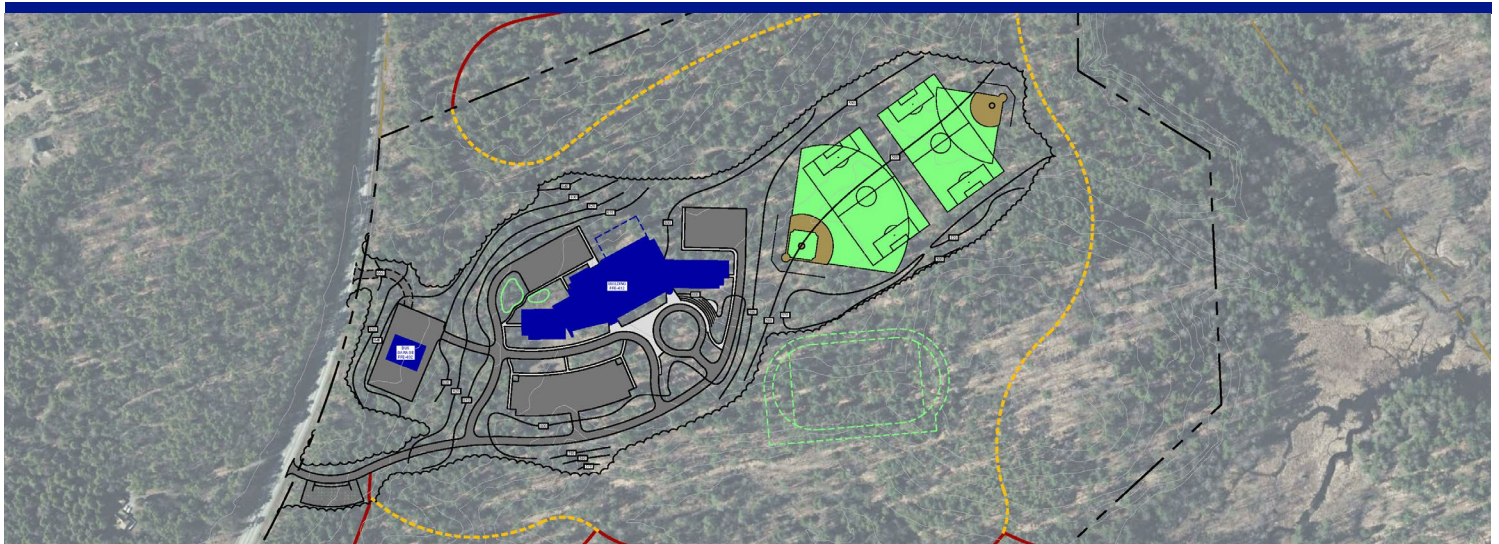
# BOQUET VALLEY

## CENTRAL SCHOOL DISTRICT



CAPITAL PROJECT  
NEWSLETTER

Issue 2  
May 2021



### IMPORTANT DATES

ALL DATES ARE TENTATIVE AND WILL BE FINALIZED AT THE NEXT BOE MEETING

**5/11** BOE Meeting at 6pm

**5/19** Virtual Community Forum at 6pm

Facilities Committee Meeting (5-6:30)

**5/20** followed by Community Forum (6:30-8)

**6/10** BOE Meeting at 6pm

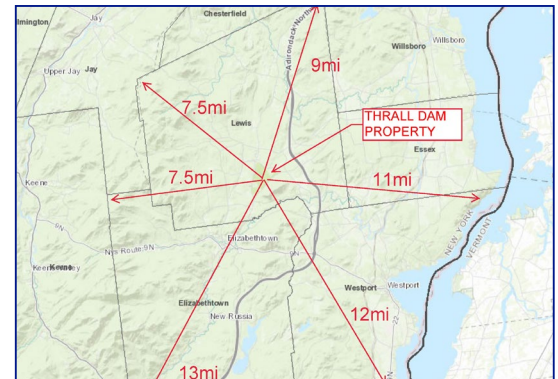
**6/16** Virtual Community Forum at 6pm

Facilities Committee Meeting (5-6:30)

**6/17** followed by Community Forum (6:30-8)

## WHY DO WE NEED TO BE ON ONE CAMPUS?

The simple answer is that it is more efficient to operate one building compared to two buildings. Since the merger, we have elected to only reduce faculty and staff through the process of attrition, meaning that when an employee vacates a position, the district decides if that position will be filled or eliminated. This is in concert with the recommendations of the merger study final report. There will be more opportunities to attrition positions if all of our faculty and staff is on one campus. With salaries and benefits making up approximately 75% of our total annual budget, this will help to keep these costs at an appropriate level.



Transportation costs are also a significant portion of our total annual budget. Every school day, we make at least 8 bus trips from one campus to another, totaling 64 miles per day or over 11,500 miles per year. You can add to this, the additional 4 miles each way to our soccer practice and game fields

*Continued on Page 2*



VISIT [WWW.BOQUETVALLEYCSD.ORG/CAPITAL-PROJECT](http://WWW.BOQUETVALLEYCSD.ORG/CAPITAL-PROJECT)

for more information on the planned capital project

Continued from Page 1

during soccer season. This is not just fuel costs or “wear and tear” on the bus, each of these buses has a driver making an hourly rate.

Some BVCSD employees currently work on both campuses. This would alleviate the need for anyone to travel from one campus to another and eliminate the need for anyone to be shared between campuses. Every employee could give 100% of their working time to only one campus.



Students would see a benefit from this as well from a programming perspective. Middle and high school students would likely see an increase to their course offerings, particularly in the special areas. There would be more support in the form of academic interventions. There would more of an opportunity for middle and high school students to work with or mentor elementary students. There would be a general increase in the feeling of being one single district based on building-wide activities.

# VOICES ON THE CAPITAL PROJECT

## WE NEED A NEW FACILITY BECAUSE...

It is the most efficient long-term option. Renovating and retrofitting the current facilities gives us a short-term plan left with inefficient buildings, old technology and insufficient grounds, while spending an amount comparable to the cost of a new project. Building new will give us a long-term plan with a superior facility which will cost less yearly in maintenance, utilities, travel and staff, and be equipped with the technology required of today’s educational expectations. Taking advantage of state building aid is the best tool we have to provide equity in educational opportunity. We struggle to offer the opportunities that more affluent,

urban neighborhoods in NY offer. We often accept this as the price of living in a rural community. This 10-year building opportunity window is our chance to provide generations of our children with a 21st century facility that prepares them for their next steps after graduation.

**ARIN BURDO**

## LET’S BUILD A BETTER FUTURE

We will never again have a chance like this to create a great learning environment for children in our community and grow our towns. I might have preferred something closer to my home, but I’m fully behind a new building at the Thrall Dam. Let’s build a better future for our towns and our children.

**JASON WELCH**

## WHAT WILL HAPPEN TO THE CURRENT FACILITIES?

One of the difficult aspect of looking at the future of our current facilities, if we decide to move to another location, is that we are asking for interest or a commitment now for a property that a potential buyer couldn’t have for 3-5 years. We have been in discussions about all three of these properties. The sale of district property would need to be approved by our voters. If you would be interested in any of these properties, or know someone who might be interested in these properties, please contact Superintendent, Josh Meyer at [jmeyer@boquetvalleycsd.org](mailto:jmeyer@boquetvalleycsd.org), or at 518-873-6371.

### MOUNTAIN VIEW MAIN CAMPUS:

Essex County has expressed interest in this facility. While many of these details need to be worked out, there is a general agreement that this facility will be purchased by the county, if approved by BVCSD voters.



### MOUNTAIN VIEW BUS GARAGE:

Based on the prime location of this building, there is some general interest for some potential businesses. We have begun some discussions but have not made any agreements of any kind. We will continue with the conversations and hope to have a plan in the near future.

### LAKE VIEW CAMPUS:

This property is extremely versatile having one main building with two large gymnasiums, a commercial kitchen and cafeteria, a stage, and an elevator; plus, two out-buildings (a bus garage and utility garage); and acres of field space.



A committee will be formed in the upcoming months to find some potential uses for this property and to find some potential buyers. In the meantime, we are working with The Westport Economic Development Committee and The Essex County Industrial Development Agency to explore potential opportunities for this campus.



# OUR TIMELINE

2021

**February-May** Provide information, gather input, answer questions

**June-August** Preliminary Design Phase

**August** Facilities Committee Review

**October** Began Final Design Phase

**NOVEMBER VOTER REFERENDUM**

**April** Site Mobilization - site preparation

**July** Facilities Committee Review

**August** Complete Final Design Phase; Board of Education Update

**September** NYSER Submission

**December** NYSER Approval

**February** Bid Opening

**March** Contract Award

**April** Site Mobilization - building construction

**December** Commissioning; Occupy Building

**June** Project Closeout

2022

2023

2024

2025

Continued from Page 2

## I CAN DO SO MUCH WITH ECOLOGY

I can do so much with Ecology in my living environment class with the trails and the wetlands area there. Even bringing in a winter ecology aspect would be really great for our students.

I have always been interested in expanding our Green Team with a focus on sustainability and really delving into comprehensive recycling and composting programs. I almost think if we move into the school with these in place, it would work better. Having a school garden and utilizing the compost would be on the list as well.

**ASHLEY HOOPER**

## READILY AVAILABLE RESOURCES FOR PHYSICAL EDUCATION & ATHLETICS

In Physical Education, just a list  
 1. Cross-country skiing on trails/more authentic. 2. Walking and running on trails 3. Room for campsites/outdoor clubs learning about camping before leaving for outbound trips. 4. Snowshoeing. 5. Mountain biking/ Teaching kids how to ride bikes

Further, the space provides an area for a ready skating rink that just needs water/a very shallow pool really. With plumbing to it that can flood the area and teach everything from Skating and Hockey to Curling. That would align perfectly with our Rollerblading capacities.

For Athletics: 1. I can see the Cross-country team able to have home meets using the trail system and being able to map out a competition trail of a specific distance. 2. We would own our own facilities and not endure the very, very long list of inconveniences that come with having home fields off school property and away from the resource of the building.

**PAUL BUEHLER**

## BETTER STEAM AND COMBINED AFTER SCHOOL ACTIVITIES

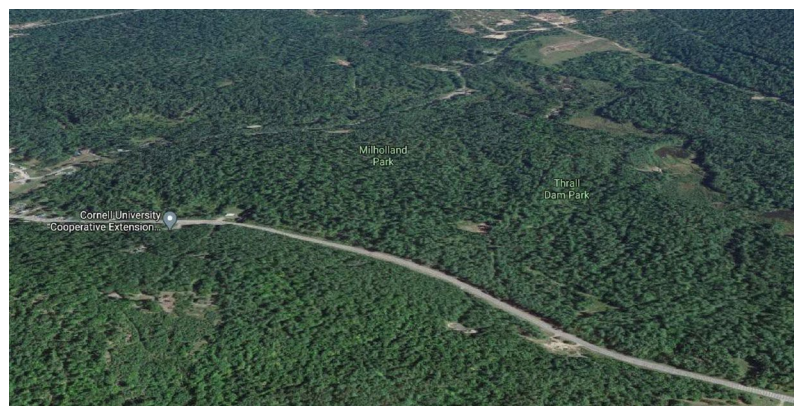
Increased opportunity for 7-12 teachers to work with elementary teachers and offer a robust K-12 STEAM program using in-house experts.

**TONYA LACKEY**

## A BEAUTIFUL NATURAL SPACE SURROUNDING THE SCHOOL

There are lots of things the Art department could do with such a beautiful natural space surrounding the school, but one thing that comes to mind would be the landscape component of it... in class, it would be really nice to be able to take students on a walk during class time to get photos of elements of nature to work from. I'd also like to do weekend and after school plein air painting sessions with art club, or with others who were interested.

**KRISTIN LARKIN**





# CAPITAL PROJECT



Proposed profile of the future Boquet Valley Central School District Building

## WHY SHOULD WE DO THIS NOW?

We are still waiting on answers from New York State Education Department (NYSED) about some of our funding questions. Until we hear something definitively, we are using the cost of \$50 million dollars from the merger study. Our construction manager is estimating a 3% increase to construction costs if we waited an additional year. That 3% would be about \$1.5 million on our project.

New York State Education Department has given us a ten-year window (2019-2029) where our district can be reimbursed 90.1% of the eligible cost of this project. This is one of the most beneficial aspects of the merger. It would allow our district to truly become one complete district fully enclosed on one campus.



**A note on funding:** We are still awaiting official monetary news from NYSED. It is unlikely that every dollar will be reimbursed 90.1%. More likely, only eligible expenses will be reimbursed 90.1%, and even then, there may be a maximum project cost as determined by NYSED. As soon as this information is available, it will be shared.)



An email address: [facilityquestions@boquetvalleycsd.org](mailto:facilityquestions@boquetvalleycsd.org) has been set up. Please email your questions directly to this address. There will also be two public forums set up, one in-person and one virtual during the months of March, April, and May. If you would like superintendent, Josh Meyer to attend a meeting of your organization during the upcoming months for the purposes of answering questions about this project, please contact the District Clerk, Jana Atwell to set it up at [jatwell@boquetvalleycsd.org](mailto:jatwell@boquetvalleycsd.org), or at 518-873-6371. Facility Committee members may also be able to answer your questions.



District Office @ Mountain View Campus  
PO Box 158  
Elizabethtown, NY 12932

Non Profit Org.  
U.S. Postage Paid  
WESTPORT  
NEW YORK  
PERMIT NO. 7

Joshua R. Meyer  
*Superintendent of Schools*

Jana Atwell, *District Clerk*

### **BOARD OF EDUCATION**

Philip Mero, *President*  
Alan Jones, *Vice President*  
Dina Garvey  
Heather Reynolds  
Karin DeMuro  
Sarah Kullman  
Suzanne Russell

